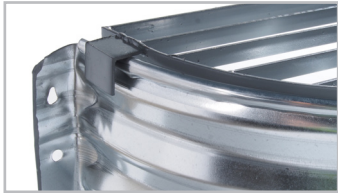




# Safe-T-Guard™ Bar Grates



- Designed to fit nearly flush with the top edge of SPC's areawalls.
- Prevents potential fall hazard of open wells.
- Manufactured from 3/16" x 3/4" steel stripbars set 2" on center welded to 3/16" x 1" barframe.
- Painted with industrial gray primer for rust resistance.
- Available in Straight, Casement Egress or Round styles.



STRAIGHT	WIDTH	DEPTH
BSG3712	37"	12"
BSG4014	40"	14"
BSG4618	46"	18"
BSG5518	55"	18"
BSG5918	59"	18"
BSG6718	67"	18"
BSG7120	71"	20"
BSG7920	79"	20"
BSG9120	91"	20"

CASEMENT	WIDTH	DEPTH
BCG3724	37"	24"
BCG4224	42"	24"
BCG4824	48"	24"
BCG5524	55"	24"
BCG6324	63"	24"

EGRESS	WIDTH	DEPTH
BCG4236	42"	36"
BCG5036	50"	36"
BCG5536	55"	36"

ROUND	WIDTH	DEPTH
BRG3716	37"	16"
BRG4620	46"	20"

**St. Paul Corrugating Co, Inc.**  
 Email: info@stpaulcorrugating.com  
 Web: stpaulcorrugating.com  
 700 39th Ave NE  
 Minneapolis MN 55421  
 Toll free: 1-800-439-9271



**Lux-Right**  
 "The original areawall"